



BELL 2018 SAIL CENTRAL CHAMPIONSHIP at HYC FRUITBOWL

With U17 Central Canadian Regional Championships

JULY 19-22, 2018

Host: Hudson Yacht Club

Organizing Authority: Sail Canada

Sailing Instructions

1. RULES

- 1.1. The regatta will be governed by the rules as defined in *The Racing Rules of Sailing*.
- 1.2. Appendix P will apply, changed as follows: P2.3 will not apply and P2.2 is changed so that it will apply to any penalty after the first one.
- 1.3. If there is a conflict between languages the English text will take precedence.
- 1.4. Rule 40 will be in effect at all times while afloat without the display of flag Y. This changes the preamble to RRS Part 4 and rule 40.
- 1.5. Oral instructions may be provided for the Opti Green fleet, this changes rule 90.1.

2. ADVERTISING

Boats may be required to display advertising chosen and supplied by the organizing authority.

3. ENTRIES

Eligible boats may be entered by completing registration with the organizing authority in accordance with the Notice of Race.

4. NOTICES TO COMPETITORS

Notices to competitors will be posted on the official notice board located on the terrace at HYC. All notice to competitors will also be published on the events social media accounts.

Facebook: <https://www.facebook.com/sailfruitbowl/>

Instagram: <https://www.instagram.com/sailfruitbowl/>

Twitter: <https://twitter.com/sailfruitbowl>



ALIVE
SINCE / 1877



5. CHANGES TO SAILING INSTRUCTIONS

Any change to the sailing instructions will be posted before 0800 on the day it will take effect, except that any change to the schedule of races will be posted by 2000 on the day before it will take effect.

6. SIGNALS MADE ASHORE

- 6.1. Signals made ashore will be displayed at the Hudson Yacht Club flag pole on the T pier in front of the club house veranda.
- 6.2. Signals made ashore over a course flag only apply to that course.
- 6.3. When flag "AP" is displayed ashore, '1 minute' is replaced with 'not less than 30 minutes' in the race signal "AP".
- 6.4. When flag D is displayed, boats shall remain onshore. **Boats shall not launch until flag D, with one sound signal, is lowered.**

7. SCHEDULE

Friday July 19	Warning signal for the practice race	1300
Saturday July 20	Warning signal for the first race of the day	1000
Sunday July 21	Warning signal for the first race of the day	1000

There will be no warning signal after 1400 on the last day of the regatta.

8. CLASS FLAGS

Class flags are as follows:

Classes	Racing area	Class Flag
Opti White	ALPHA	OPTI Class Flag <u>OR</u> numeral pennant 1
Opti Blue	ALPHA	
Opti Red	ALPHA	
Boards	ALPHA	Numeral pennant 2
Open	BRAVO	Numeral pennant 3
420	BRAVO	Class flag <u>OR</u> numeral pennant 4
29er	BRAVO	Class flag <u>OR</u> numeral pennant 5
Laser, CII, 4.7	CHARLIE	Class flag <u>OR</u> numeral pennant 6
Radial	CHARLIE	Class flag <u>OR</u> numeral pennant 7



9. RACING AREAS

There will be three racing areas:

- ALPHA (Opti, Board)
- BRAVO (420s, 29ers)
- CHARLIE (Laser, Radial, C II, 4.7)
- Opti green fleet TBD.

Attachment A shows the locations of the racing areas.

10. THE COURSES

- 10.1. The diagram in Attachment B show the courses, including the approximate angles between legs, the order in which marks are to be passed, and the side on which each mark is to be left. The Opti Green activities and courses will be announced at the Opti Green competitors' meeting and on the water.
- 10.2. On any course where a mark is shown as a gate, if there is only one mark in the place of a gate, competitors shall round it to port.

11. MARKS

Mark type	ALPHA	BRAVO	CHARLIE
Start mark	All fleets: A staff displaying an orange flag		
Finish mark	All fleets: A staff displaying an orange flag		
Turning marks	Yellow Tetrahedrons	Orange Tetrahedrons	Yellow Tetrahedrons
New marks, as provided in instruction 13	Orange Tetrahedrons	Yellow Tetrahedrons	Orange Tetrahedrons

Any guard mark or small vessel attached to the signal boat shall be considered as a permanent part of the committee boat.

12. THE START

- 12.1. The starting line will be between a staff displaying an orange flag on the signal boat at the starboard end and the starting mark at the port end.
- 12.2. A boat starting later than 4 minutes after her starting signal will be scored Did Not Start. This changes rule A4 and A5.

13. CHANGE OF THE NEXT LEG OF THE COURSE

To change the next leg of the course, the race committee will lay a new mark (or move the finishing line) and remove the original mark as soon as practicable. When, in a subsequent change a new mark is replaced, it will be replaced by an original mark.



14. TIME LIMITS AND TARGET TIMES

Time limits and target times are as follows:

Class	Mark 1 Time Limit	Target Time
Opti, Laser, 4.7, CII	20 minutes	40 minutes
Radial & Laser	20 minutes	40 minutes
420	20 minutes	35 minutes
29er	20 minutes	35 minutes
Open	20 minutes	40 minutes

- 14.1. If no boat has passed Mark 1 within the Mark 1 time limit the race will be abandoned. Failure to meet the target time will not be grounds for redress. This changes rule 62.1(a).
- 14.2. When it is in the best interest of the fleet and its competitors, the race committee may award finishing places to boats which are delaying the finish of the race (on course finish). The scoring abbreviation for an on course finish will be OCF. This changes rules 28.1, 35 and A4.

15. THE FINISH

The finish line will be between a staff displaying an orange flag on the race committee boat and the finishing mark.

16. PENALTY SYSTEM

For the 29er class, rule 44.1 and rule P2.1 are changed so that the Two-Turns Penalty is replaced by the One-Turn Penalty.

17. PROTESTS AND REQUESTS FOR REDRESS

- 17.1. Protest forms are available at the Jury desk located in the HYC main hall, and must be filed there with the Jury secretary. The protest time limit is 60 minutes after the course signal boat docks.
- 17.2. Protest notices will be posted on the official notice board within 10 minutes of being filed to inform competitors where and when there is a hearing in which they are parties to a protest or named as witnesses. Protests will be heard as soon as possible and in approximate order of receipt.
- 17.3. Notices of protests by the race committee or protest committee will be posted to inform boats under rule 61.1(b).
- 17.4. A list of boats that, under instruction 1.2 have been penalised for breaking rule 42 will be posted.
- 17.5. On the last scheduled day of racing a request for reopening a hearing shall be delivered (This changes RRS 66):



ALIVE
SINCE / 1877



- 17.5.1. within the protest time limit if the requesting party was informed of the decision on the previous day;
- 17.5.2. no later than 30 minutes after the requesting party was informed of the decision on that day.
- 17.6. On the last scheduled day of racing a request for redress from a protest committee decision shall be delivered no later than 30 minutes after the decision was posted. This changes rule 62.2.

18. SCORING

- 18.1. 7 races are scheduled for the Opti, Laser, Laser Radial, 4.7, CII, Boards and Open Class.
- 18.2. 10 races are scheduled for 420s and 29ers.
- 18.3. One race is required to be completed to constitute a series.
- 18.4. When fewer than 5 races have been completed, a boat's series score will be the total of her race scores.
- 18.5. When 5 or more races have been completed, a boat's series score will be the total of her race scores excluding her worst score.
- 18.6. More or fewer races may be held in the Opti green fleet.
- 18.7. Opti Green Fleet will not have individual scoring.
- 18.8. Results will be posted at www.sail123.com. Links to the results page will be posted on the event's social media accounts when the results have been released.

19. INSURANCE

Each participating boat shall be insured with valid third party liability insurance with a minimum cover of \$1,000,000 per event or the equivalent.

20. SAFETY REGULATIONS

- 20.1. A boat that retires from a race shall notify the race committee as soon as possible or the Race Office immediately after returning to the shore.
- 20.2. All boats shall check in and out at the lunch distribution station located in or near the club house by signing out a bracelet before leaving the harbor and signing back in as soon as possible after racing. Failing to sign out or in will be subject to protest.
- 20.3. In adverse conditions, and if so decided by the race committee, support boats shall come under the direction of the race committee for safety purposes. See SI 22.7
- 20.4. The event safety team will monitor channel 71. All on water emergencies should be broadcast using channel 16.

21. OFFICIAL BOATS

- 21.1. Race committee boats may display a blue identification flag.
- 21.2. Jury boats will display flag J.
- 21.3. Safety boats will display a white flag with a vertical blue stripe



21.4. Failure of a committee boat to fly an identification flag is not grounds for redress. This changes rule 62.1 (a).

22. SUPPORT BOATS

- 22.1. Support Boats are defined as any boat related to the event in any capacity (coach boat, observer boat, parent / sailor support group's boat(s)), and not already officially identified as a Race Committee Boat or Judge Boat.
- 22.2. All support boats shall register with the Organizing Authority by completing the Support Boat Registration form and be identified by a flag. The flag will be issued at the time of registration and shall be returned to the registration desk at the end of the regatta. A deposit of \$25 will be charged for the flag.
- 22.3. Registered support boats will be allowed to launch and will be assigned a berth or mooring area for the duration of the regatta. Such berth or mooring is subject to the terms and conditions of all boats using the club controlled facilities.
- 22.4. Registered support boats shall stay outside the racing area from the warning signal of the first fleet to start until all boats have finished or all races have been postponed or abandoned. The racing area is described as 50 metres to leeward of the starting line and 100 metres outside all lay lines. This instruction does not apply to the Opti Green fleet.
- 22.5. For the Green fleet Sail Canada certified coaching support while racing is encouraged, and will be monitored.
- 22.6. Failure of a support boat to register, or abide by 22.2 or 22.3 will be considered a breach of RRS 2, Fair Sailing, by the boats associated with the support boat, and is subject to protest by the race committee, protest committee, or a member of the OA. The penalty applied to the boat or boats associated with the support boat will be at the discretion of the protest committee. This modifies rule 64.1c.
- 22.7. Support boats are requested to monitor the race committee working channel. It is recognized that the coaches are essential to the safety plan for these regattas and they are expected to assist in the support of the safety plan. The race committee working channel(s) will be posted on the official notice board.

23. RIGHTS TO USE NAME AND LIKENESS

In participating in an event, a competitor automatically grants to the Organizing Authority and the sponsors of the event, the right in perpetuity, to make, use and show, from time to time and at their discretion, any motion pictures, still pictures and live, taped or film television and other reproductions of him/her during the period of the competition for the said event in which the competitor participates and in all material related to the said event without compensation.

24. AWARDS

Prizes will be given as follows:

- 24.1. Sail Canada medals will be awarded to the top three finishers in all classes.
- 24.2. Opti Green Fleet participants will receive certificates of participation.
- 24.3. Other prizes may be awarded at the discretion of the OA.



ALIVE
SINCE / 1877



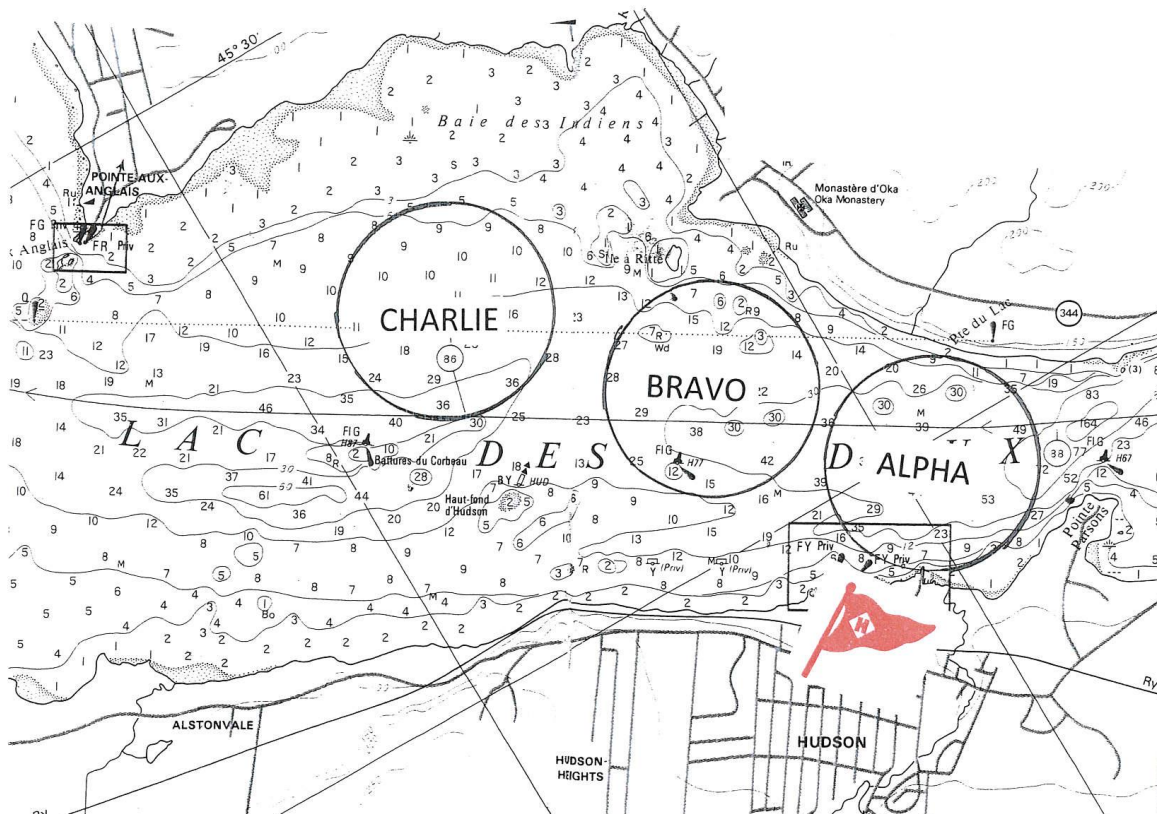
25. DISCLAIMER OF LIABILITY

Competitors participate in the regatta entirely at their own risk. See rule 4, Decision to Race. The organizing authority will not accept any liability for material damage or personal injury or death sustained in conjunction with or prior to, during, or after the regatta.

26. TRASH DISPOSAL

Coach boats, race committee boats and other support boats will accept trash.

ATTACHMENT/ ADDENDA A

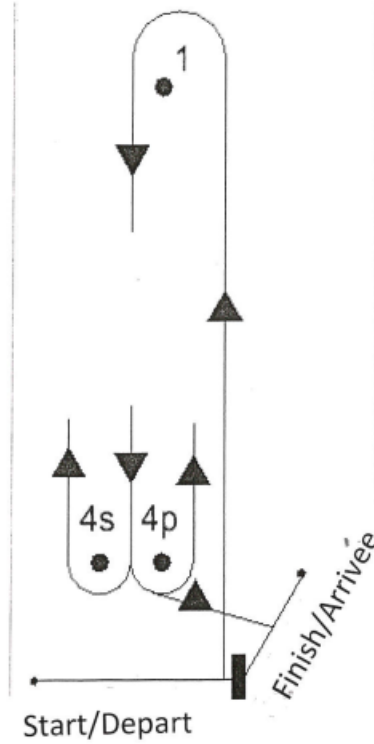


ALIVE
SINCE / 1877



ATTACHMENT /ADDENDA B

Windward/Leeward with Reaching Finish/Arrivée



Course marked on course board

- L1 Start-1-4p-Finish
- L2 Start-1-4s/4p-1-4p-Finish
- L3 Start-1-4s/4p-1-4s/4p-1-4p-Finish

Parcours indiquée au babillard

- L1 Depart-1-4p-Arrivée
- L2 Depart-1-4s/4p-1-4p-Arrivée
- L3 Depart-1-4s/4p-1-4s/4p-1-4p-Arrivée



ALIVE
SINCE / 1877

