

SAILING INSTRUCTIONS
2019 INTERNATIONAL ETHELLS CANADIAN CHAMPIONSHIPS
(to be held co-jointly with the J22 Canadian Championship)
Hudson Yacht Club, Hudson QC
September 5-8, 2019

1. Rules

- 1.1 The regatta will be governed by the rules as defined in The Racing Rules of Sailing.
- 1.2 These Sailing Instructions, including amendments, will take precedence in the case of a conflict with the Notice of Race. This changes RRS 63.7.
- 1.3 The Championship is a WS Recognized Event and is sanctioned by the International Etchells Class as a Class “C” event.

2. Notices to Competitors

Notices to competitors will be posted on the official HYC notice board located on the clubhouse terrace. Notices to competitors may also be posted on the event registration web site, but in the event of conflict between the two sources, the official HYC notice board will govern.

3. Changes to Sailing Instructions

Any changes to the sailing instructions will be posted before 0800 on the day any changes first take effect, except, that a change in the schedule of races will be posted by 1800 on the day before it takes effect.

4. SIGNALS MADE ASHORE

- 4.1 Signals made ashore will be displayed at the flagpole located on the T-Pier in front of the clubhouse terrace. When a signal is displayed over a class flag it applies to that class.
- 4.2 When flag AP is displayed ashore, ‘1 minute’ is replaced with ‘not less than 30 minutes’ in the race signal AP.

5. Schedule of Races

- 5.1 There are 8 races scheduled
- 5.2 The scheduled time for the warning for the first race Friday, Sept 6th is 1100..
- 5.3 The scheduled time for the warning for the first race on Saturday Sept 7th is 1000.
- 5.4 The scheduled time for the warning for the first race on Sunday Sept 8th is 0930.
- 5.5 On each day of racing, the next race will follow as soon after as possible.
- 5.6 No warning signal will be displayed after 1400 hours Sunday Sept 8th.
- 5.7 When there has been a long postponement and more than one race will be held on the same day, the warning signal will be made as soon as practicable. To alert boats that a race or sequence of races will begin soon, an orange flag will be displayed with one sound signal at least 4 minutes before a warning signal is displayed.

6. Class Flags

The flag for the Etchells will be the class flag or the Number 1 pennant.

7. Racing Area:

Lake of Two Mountains, West of HYC.

8. Course

8.1 The diagrams in Addendum A show the course, including the approximate angles between legs, the order in which marks are to be passed, and the side on which each mark is to be left. The approximate length (TBD)

8.2 The Course will be posted on the Race Committee Signal Boat prior to the Warning Signal of each race.

8.3 The leeward mark will be a gate. If there is only 1 mark, boats must round the mark leaving it to port.

9. Marks

9.1 Mark 1 will be an orange inflatable buoy

9.2 The Offset Mark, if deployed, will be a round ball.

9.3 The gate Marks will be yellow inflatable buoys.

9.4 The start & finish marks will be a staff displaying an orange flag.

9.5 The change mark for Mark 1 will be a yellow inflatable buoy.

10. The Start

10.1 The starting line will be between staffs displaying orange flags on the start marks.

10.2 A boat that does not start within 5 minutes after her start signal will be scored Did Not Start without a hearing. This changes rule RRSA4 and A5.

10.3 Boats whose warning signal has not been made shall avoid the starting area during the starting sequence for other fleets.

11. Recalls

In the event of an individual recall, the sail numbers, bow numbers or identification of any boat or boats that are identified as OCS may be announced on the Race Committee VHF channel. Failure of a boat to see or hear her recall notification, and the timing and order of such hails, or the length of time it takes to make a notification on the VHF radio will not be grounds for redress. (This changes *RRS* 62.1 (a).)

12. Change of Course

To change the position of the next mark, the race committee will lay a new mark (or move the finishing line) and remove the original mark as soon as practicable. When in a subsequent change a new mark is replaced, it will be replaced by an original mark.

13 The Finish

The finish line will be between the staffs displaying orange flags on the finishing marks.

14 Time Limits and Target Times

14.1 Time limits and target times are as follows:

<u>Mark 1</u>	<u>Race</u>	<u>Race Target</u>
<u>Time Limit</u>	<u>Time Limit</u>	<u>Time</u>
25 minutes	80 minutes	50 minutes

14.2 If no boat has passed Mark 1 within the Mark 1 Time Limit, the race will be abandoned.

14.3 If no boat has finished the race within the Race Time Limit, the race will be abandoned.

14.4 Failure to meet the Race Target Time will not be grounds for redress. This changes RRS 62.1(a).

14.5 Boats failing to finish within 15 minutes after the first boat sails the course and finishes shall be scored 1 more than the last boat to finish within the time limit, without a hearing. This changes RRS 35, A4 and A5.

15. Penalty System

15.1 The Penalty for breaking a rule of Part 2 shall be a One Turn Penalty (one tack and one gybe in the same direction). However, for a boat that may have broken a rule of Part 2 within the three boat length zone of any rounding or finishing marks, her penalty shall be a Two-Turns Penalty. (This changes RRS 44.1).

15.2 The penalty, if any, for a violation of a rule other than a rule of RRS Part 2 or rule 31 will be at the discretion of the Protest Committee and may be other than disqualification. This changes RRS 64.1(a).

16. Protests and Requests for Redress

16.1 Protest forms are available at the race office. Protests shall be delivered there within the protest time limit, which is 60 minutes after the RC boat has docked for the day.

16.2 Notices will be posted within 10 minutes of the protest being delivered to the race office jury desk to inform competitors of hearings in which they are parties or named as witnesses. Hearings will be held in the HYC conference room beginning as soon as possible when all parties are assembled.

16.3 On the last day of the regatta a request for reopening a hearing shall be delivered:

(a) Within the protest time limit if the party requesting reopening was informed of the decision on the previous day.

(b) No later than 30 minutes after the party requesting reopening was informed of the decision that day. This changes RRS 66

17. Scoring

17.1 Three races are required to be completed to constitute a series.

17.2 When fewer than 6 races have been completed, a boat's series score will be the total of her race scores.

17.3 When 6 or more races have been completed, a boat's series score will be the total of her race scores excluding her worst score.

18 Safety Regulations

18.1 Prior to the first Warning Signal each day, each boat shall check-in with, and be recognized by the Race Committee Signal Boat when it is on station by passing close by on starboard tack and hailing their bow number.

18.2 A boat that retires from a race shall notify the race committee as soon as possible.

19 Radio Communication

19.1 All competing boats shall carry a hand held VHF radio capable of transmitting and receiving VHF channels.

19.2 The Race Committee's VHF channel will be 72.

19.3 Race Committee broadcasts concerning its intentions, the course to be sailed, starting times, course changes, OCS hails, etc. are a courtesy only. Failure of the Race Committee to make a broadcast, the timing of a broadcast, or the failure of a boat to hear a broadcast shall not be grounds for redress under rule 62.1(a).

19.4 No competitor shall make or receive radio, cell phone or computer communications commencing from the first Warning Signal of the day until the conclusion of the day's racing, except in the case of an emergency.

20 Prizes.

20.1 Prizes will be awarded to the top three finishers overall with the 1st place finisher being presented with The International Etchells Canadian Championship trophy.

21 Disclaimer of Liability

Competitors participate in the regatta entirely at their own risk. See RRS 4, Decision to race. The organizing authority will not accept any responsibility for material damage or personal injury or death sustained in conjunction with or prior to, during, or after the regatta.

22 Replacement of Crew or Equipment

22.1. Substitution of crew will not be allowed without prior written approval of the Race Committee.

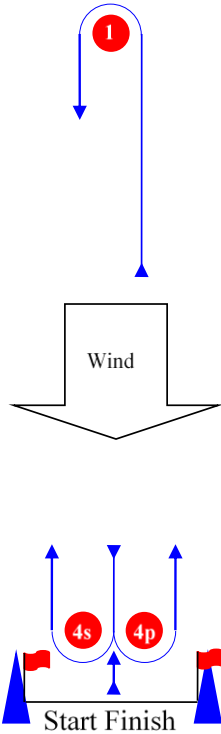
22.2. After registration until completion of racing, no sail shall be replaced, re-cut or altered. Repairs to sails pursuant to all applicable rules are permissible only upon written approval of the Regatta Chairman.

23 Insurance

Each participating boat shall be insured with valid third party liability insurance with a minimum cover of \$1,000,000 per incident or the equivalent.

Course Illustrations – Windward Leeward
Boats at both ends of the starting line and finishing lines

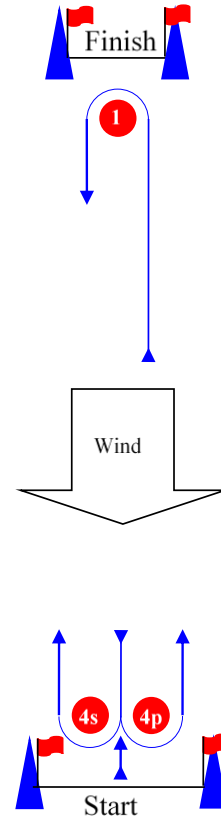
L



Course: Leeward finish

Signal	Mark Rounding Order
L2	Start – 1 – 4s/4p – 1 – Finish
L3	Start – 1 – 4s/4p – 1 – 4s/4p – 1 – Finish
L4	Start – 1 – 4s/4p – 1 – 4s/4p – 1 – 4s/4p – 1 – Finish

W

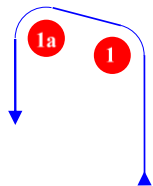


Course: Windward Finish

Signal	Mark Rounding Order
W2	Start – 1 – 4s/4p – Finish
W3	Start – 1 – 4s/4p – 1 – 4s/4p – Finish
W4	Start – 1 – 4s/4p – 1 – 4s/4p – 1 – 4s/4p – Finish

LA / WA

Course: Windward/leeward with offset mark 1a



Signal	Mark Rounding Order
LA2	Start – 1 – 1a – 4s/4p – 1 – 1a – Finish
LA3	Start – 1 – 1a – 4s/4p – 1 – 1a – 4s/4p – 1 – 1a – Finish
LA4	Start – 1 – 1a – 4s/4p – 1 – 1a – 4s/4p – 1 – 1a – 4s/4p – 1 – 1a – Finish
WA2	Start – 1 – 1a – 4s/4p – Finish
WA3	Start – 1 – 1a – 4s/4p – 1 – 1a – 4s/4p – Finish
WA4	Start – 1 – 1a – 4s/4p – 1 – 1a – 4s/4p – 1 – 1a – 4s/4p – Finish